



# PARTS LIST FOR NO'S 2330 & 2331

Form A211  
Date 11-96

## SIOUX ANGLE ATTACHMENT

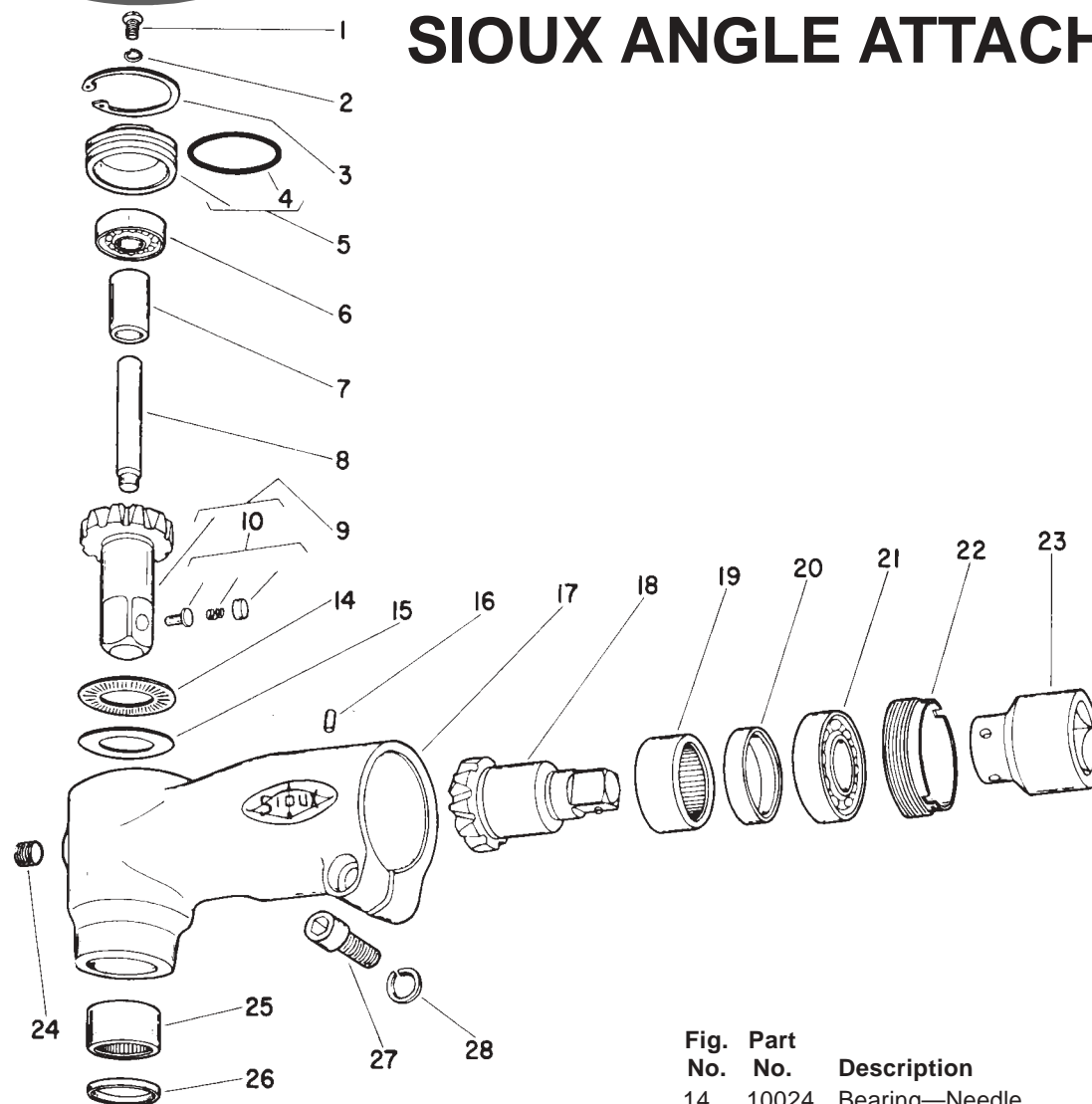


Fig. No.	Part No.	Description
1.	06678	Screw #8
2.	09712	Washer—Lock #8
3.	21498	Ring—Retainer
4.	14334	Ring—"O"
5.	33592	Ass'y—Bearing Retainer (2330)
	33593	Ass'y—Bearing Retainer (2331)
6.	10108	Bearing—Ball
7.	34843	Spacer
8.	34844	Spindle—Pilot
9.	33505	Ass'y—Gear & Retainer (2330)
	33506	Ass'y—Gear & Retainer (2331)
10.	33465	Ass'y—Socket Retainer (2330)
	43890	Ass'y—Socket Retainer (2331)

Fig. No.	Part No.	Description
14.	10024	Bearing—Needle
15.	10029	Seat—Bearing
16.	30256	Pin
17.	43265	Housing
18.	33594	Ass'y—Pinion
19.	10022	Bearing—Needle
20.	34808	Spacer—Bearing
21.	10239	Bearing—Ball
22.	34807	Sleeve
23.	34812	Coupling (2330)
	33503	Coupling (2331)
24.	30312	Plug
25.	10G11	Bearing—Needle
26.	30267	Seat
27.	08270	Screw—1/4"
28.	09748	Washer—Lock 1/4"

\*Order Quantity As Required

**SIOUX<sup>TM</sup>**  
**TOOLS INC.**

FURNISH CATALOG, SERIAL, AND MODEL NUMBER  
WHEN ORDERING PARTS

2901 FLOYD BOULEVARD ■ PO BOX 507 ■ SIOUX CITY, IOWA 51102-0507 ■

Printed In U.S.A.



**SIOUX<sup>TM</sup>**  
**TOOLS INC.**

2901 FLOYD BOULEVARD ■ PO BOX 507 ■ SIOUX CITY, IOWA 51102-0507 ■

Printed In U.S.A.